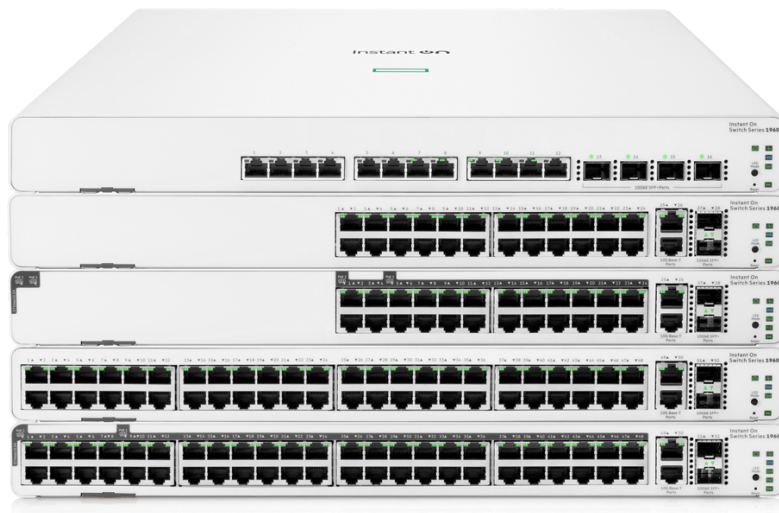


HPE Networking Instant On Switch 1960



What's new

- Simplify network management by stacking up to four Instant On 1960 switches and managing them through one single IP address. Stacking supported via local and cloud-managed stacking modes.
- Smart-managed layer 2+ Ethernet access switch series ready to deploy in 12-port, 24-port, and 48-port for non-PoE and PoE (supports Class 4 and Class 6 PoE) models.
- The Networking Instant On 1960 aggregation switches comes with twelve 10 GBase-T and four SFP+ ports, providing 10 G connectivity to servers, network storage

Overview

HPE Networking Instant On Switch 1960 series, consist of advanced, smart-managed, fixed configuration Gigabit stackable switches designed for small and growing businesses that are easy to deploy and affordable. These switches are designed to scale as business grows, making adding more employees, devices and applications simple. The Instant On 1960 switches are made to handle the today bandwidth-heavy applications like voice and video conferencing, enabling consistent connectivity to improve user experience and application performance. These switches come with flexible management option: local web GUI or Instant On mobile app and cloud-based web portal.

devices and access switches alike.

- For environments with heavy bandwidth needs, 10 GBase-T and SFP+ uplink ports deliver lightning-fast network speeds and nearly eliminates traffic bottlenecks.
- HPE Networking Instant On mobile app and/or cloud-based web portal for easy network management onsite or remotely.

Features

High-level Gigabit with 10 GbE Networking for Advanced Small Businesses

Each model of the HPE Networking Instant On Switch 1960 series includes four 10 GbE connections to connect to servers, network storage devices, or to other switches.

Two connections of 10 GBASE-T deliver 10 GbE over copper Category 5/6a cabling for simple, affordable, high-bandwidth connections to a maximum distance of 100 meters.

With PoE models, up to 30W PoE power delivery is available for Class 4 PoE devices like access points, surveillance cameras and VoIP phones, and up to 60W PoE power delivery is available for Class 6 PoE devices like pan-tilt zoom cameras and video-enabled IP-phones.

Simplify Network Deployment and Management for Small Organizations

The HPE Networking Instant On Switch 1960 series is a complete portfolio for increased small business flexibility. It consists of six models including two 24-port and two 48-port models in PoE and non-PoE configurations, a 12-port multi-rate switch, and a 12-port 10-Gigabit aggregation switch.

The 12-port, 24-port, and 48-port PoE models come with a power budget of 480W, 370W and 600W respectively to support the latest PoE-powered IoT devices.

The HPE Networking Instant On Switch 1960 series can be deployed using two management modes – Instant On cloud-management (access via mobile app and/or web portal) and the local web GUI.

Each switch has a pull-out tag, known as a luggage tag, on the front panel of the switch.

The tag includes a QR code that includes switch ID information (SKU number, SKU name, serial number, and MAC address) for easy switch onboarding through Instant On mobile app.

Ease of Use with Cloud-Managed Stacking

The HPE Networking Instant On mobile app and cloud-based web portal make cloud-managed stacking easy — just follow the recommendations to stack up to four HPE Networking Instant On Switch 1960 switches and manage as a single entity.

The HPE Networking Instant On mobile app automatically detects members, making multiple stack members easy to setup and manage remotely.

Automated configurations and streamlined workflows allow users to manage all stack members through one single dashboard without the need for device reboot.

Robust Security to Protect Your Network

The HPE Networking Instant On Switch 1960 series lets you use VLANs and Access Control Lists (ACL) to set bounds on what data can be seen by which users.

Leverage 802.1X with a RADIUS server to ensure only known and authorized users can access your network.

Supports automatic denial-of-service (DOS) monitors and protects the network against malicious attacks.



Technical specifications**HPE Networking Instant On Switch 1960**

Ports	Maximum 48 10/100/1000 RJ-45 ports, 2 SFP+ 10 GbE ports, 2 10 GBASE-T ports, depending on model PoE/PoE+ available on select models
Memory and processor	Single-Core ARM v7 Cortex-A9 @800 MHz 1 GB DDR3 512 MB NAND flash Packet buffer size: 1.5 MB
Throughput	238 Mpps maximum, depending on model
Switching capacity	320 Gbps maximum, depending on model
PoE capability	600W maximum, depending on model
Stacking capabilities	4H height
Management features	HPE Networking Instant On Cloud Web browser SNMP Manager
Input voltage	100-127VAC / 200-240VAC
Operating temperature	0-40°C, 0-10,000 ft
Power consumption	790W maximum, depending on model
Product dimensions (metric)	40.28 x 44.25 x 4.40 cm
Weight	4.9 kg, maximum, depending on model



For additional technical information, available models and options, please reference the [QuickSpecs](#)

HPE Aruba Networking Services

HPE Aruba Networking services simplify and accelerate the network technology lifecycle, enabling your network to scale with better predictability and cost-effectiveness. Whether you operate your own network and need to improve your IT efficiencies, or you want to offload some of the burden, we have the services you need to reach your goals.

Learn more about what HPE Services - Aruba Networking has to offer at: <https://www.hpe.com/edge/services>

Support Services

Our support portfolio provides the essential support elements as well as proactive and preventive features to help you improve your team's productivity and get the most from your network. Our support customers benefit from faster issue resolution, simplified operations and efficiencies, and reduced network issues.

Professional Services

With deep intellectual capital and purpose-built tools, our team delivers a range of standard and custom professional services designed to accelerate your value from HPE Aruba Networking technology.

Project based services include: Annual subscription services include:

- Planning, audit, and assessment
- Architecture review and design
- Deployment, migration, and knowledge transfer
- Network optimization
- Intelligent Operations
- Customer Experience Management

Our [Education Services](#) allow your team to come up to speed quickly.

HPE GreenLake for Networking

Our NaaS solution, is part of the HPE GreenLake services family, and simplifies network operations, accelerates equipment handling, and increases the value of your HPE Aruba Networking solution. If you need expert guidance and automation-based operations for your team, please explore our NaaS approach through HPE GreenLake for Networking.

Make the right purchase decision.
Contact our presales specialists.

Visit [HPE.com](https://www.hpe.com)



Contact us